

MEGALOCHARI VII



PARTICULARS

Vessel Type	Azimuth Stern Drive (ASD) Tug
IMO Number	9354985
Port of Registry	Piraeus
Year Built	2006
Classification Notations	Bureau Veritas 100A1, Tug, FIFI-1 with water spray LMC, IWS

DETAILS

Length Overall	31.5 m
Breadth	11 m
GRT-NRT	436/130
Depth Moulded	6.1 m
Maximum draft	5.1 m
Clear deck Space	62 m ²
Max Speed/ Consumption 24 h/ ECO	12.5 kn / 11 m ³ / 7 m ³
Bollard Pull	68 t
Rudders	2 AZIMUTH Thrusters (ASD)
Joystick	Fitted

CAPACITY

Fuel Oil	176.60 tons
Fresh Water	20.64 tons
Foam	33.94 tons

MACHINERY

Main Engines	2x Niigata 6L28HX – 2,465 BHP each
Generators	2x Cummins 6CTA 8 - 164 KW each 1x Cummins 6 BT 5.9 65 KW
Propulsion	2x Z-peller / ZP-41, 2,700 mm / 220 rpm



113 Filonos Street,
185 35 Piraeus,
Greece
T: +30 210 4522131
F: +30 210 4180176
W: www.megatugs.gr

ACCOMMODATION

Cabins	5
Berths	8

FIRE FIGHTING

Class	FIFI I
Monitors	2 x 1200 m ³ /h
Pumps	2700 m ³ /h

DECK EQUIPMENT

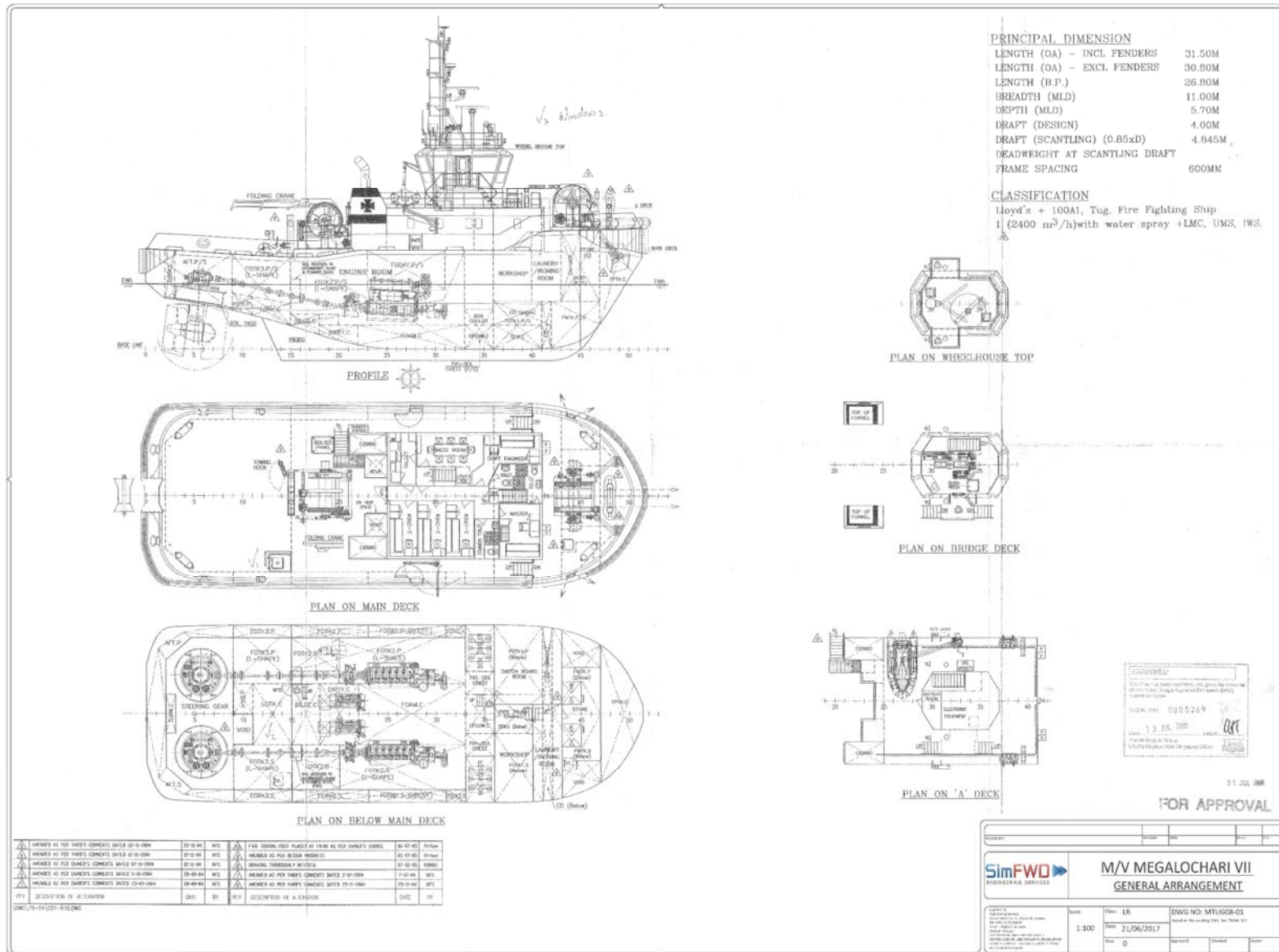
Aft Winch	Hydr. IBERCISA MR-H/170/2/800-52/is
Forward Winch	Hydr. ME2.2THAW30TTW
Hydraulic Crane	FASSI, 1.325 t

LIFESAVING

Liferafts	2 x 10 persons
-----------	----------------

VIDEO PRESENTATION:

<https://youtu.be/oVUwwGAzTUo>



Particulars are believed to be correct but are not guaranteed. All figures given are approximate only. Owners reserve the right to amend the specifications without notification.