

# PANTOKRATOR



## PARTICULARS

Vessel Type	Anchor Handling, Salvage Tug
IMO Number	9376880
Port of Registry	Piraeus
Year Built	2006
Classification	Bureau Veritas Hull Mach, Tug, Oil Recovery Ship, FIFI I – Water Spray, Unrestricted navigation

## DETAILS

Length Overall	40 m
Breadth	11.8m
GRT-NRT	499/149
Depth Moulded	4.6 m
Maximum draft	3.8 m
Clear deck Space	150 m <sup>2</sup>
Deck loading	5 t/m <sup>2</sup>
Max Speed/ Consumption 24 h	13 kn / 7 m <sup>3</sup>
Economical speed/ Consumption 24 h	10 kn / 4.2 m <sup>3</sup>
Bollard Pull	61.8 t
Sewage Plant	MARPOL compliant, 20 persons
Rudders	Twin
Joystick	Not fitted

## CAPACITY

Fuel Oil	361.80 m <sup>3</sup>
Potable Water	172.3 m <sup>3</sup>
Foam	7.8 m <sup>3</sup>
Detergent	9.3 m <sup>3</sup>

## MACHINERY

Main Engines	2 x Caterpillar 3516B – 2026 BHP each
Generators	2 x Caterpillar 3406C – 288 BHP – 215 kW each
Port Generator	1 x CAT DE110E2 110kVA
Bow Thruster	3 t
Propulsion	2 x Fixed pitch

### ACCOMMODATION

Berths 2x 1, 2x 2, 3x 4  
Total 18

### FIRE FIGHTING

Class FIFI I  
Monitors 2 x 1200 m<sup>3</sup>/h  
Pumps 1 x 2900 m<sup>3</sup>/h

### DECK EQUIPMENT

#### Towing Winch

Type Double drum waterfall  
Pull 50 t  
Wire Capacity 1000 m x 42 mm

#### Anchor Handling Winch

Type Plimsoll double drum waterfall  
Pull 50 t  
Brake Holding 120 t  
Wire Capacity 1000 m x 42 mm

#### Tugger Winch

Number & Capacity 2 x 5 t SWL  
Wire Capacity 100 m x 26 mm

#### Other Deck Equipment

Towing Pins Plimsoll 100 t  
Stern Roller Plimsoll 1.45 m x 3.5 m, 150 t SWL  
Shark Jaws 100 t Strong Jaw, 78 mm  
Electrical Sockets 4 x 415 v x 32A  
Hydraulic Crane 27S 5.7 t @ 4.0 m, 950 Kg @ 16.7 m

### LIFESAVING

Liferafts 2 x 20 man  
Lifejackets 23  
FRC/Rescue Boat/Davit SOLAS Semi-rigid BMD Rescue boat & KATO KS 454 RC Davit  
Lifebuoys 8

### SPECIALIST

Rescue Zone Fitted

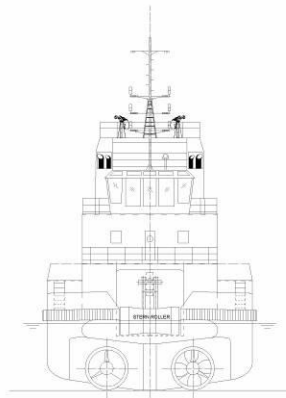
### SALVAGE/ ANTIPOLLUTION

Oil Spill Response booms Yes  
Salvage pumps Yes

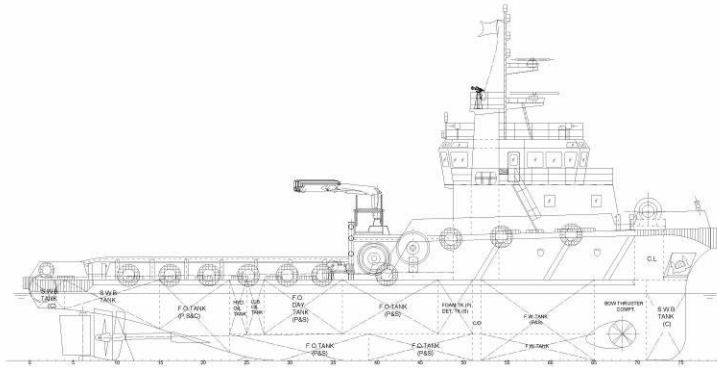
### VIDEO PRESENTATION:

<https://www.youtube.com/watch?v=WMI8Ls0fJ64>

# GENERAL ARRANGEMENT

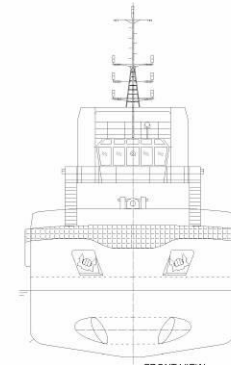


STERN VIEW

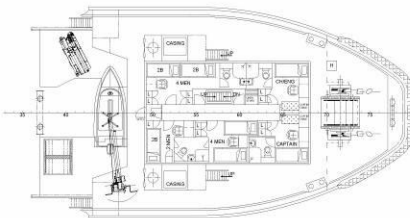


FRAME SPACING AT 500mm APART

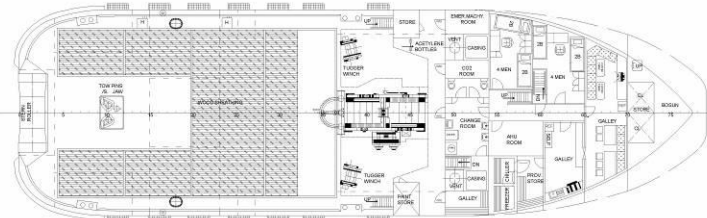
OUTBOARD PROFILE



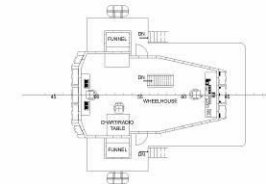
FRONT VIEW



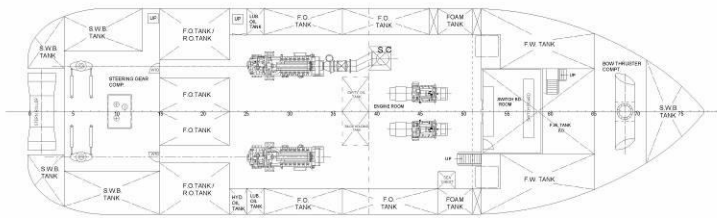
FORECASTLE DECK



MAIN DECK PLAN



WHEELHOUSE DECK



BELOW MAIN DECK

**MAIN DIMENSIONS:**  
 LENGTH over all 40.00m  
 LENGTH between P.P. 34.90m  
 BREADTH moulded 11.80m  
 DEPTH moulded 4.60m  
 DESIGN DRAFT 3.80m  
 TOTAL POWER 4000 BHP  
 TRIAL SPEED 12.00 Knots  
 BOLLARD PULL 50.00 Tons

Description:	Revision:	Date:	Resp:	Chk:
<b>M/V PANTOKRATOR</b>				
<b>GENERAL ARRANGEMENT</b>				
SimFWD P.C Engineering Services <small>SimFWD P.C Engineering Services 113 Filonos Street, Piraeus, Greece T: +30 210 4522131 F: +30 210 4180176 W: www.megatugs.gr</small>	Scale: <b>1:100</b>	Class: <b>BV</b> Date: <b>22/08/16</b>	Dwg: <b>MTUG02-02</b> No.: Rev: <b>1</b>	
		Approved:	Checked:	Drawn: