

CAPTAIN MICHALIS X



PARTICULARS

| | |
|--------------------------|-------------------------------------------------------------|
| Vessel Type | Azimuth Stern Drive (ASD) Tug |
| IMO Number | 9578567 |
| Port of Registry | Piraeus |
| Year Built | 2012 |
| Classification Notations | Bureau Veritas 100A1, Tug, FIFI-1 with water spray LMC, IWS |

DETAILS

| | |
|----------------------------------|------------------------------------------------|
| Length Overall | 30.8 m |
| Breadth | 11 m |
| GRT-NRT | 442/132 |
| Depth Moulded | 6.1 m |
| Maximum draft | 4.6 m |
| Clear deck Space | 62 m ² |
| Max Speed/ Consumption 24 h/ ECO | 12.5 kn / 11 m ³ / 7 m ³ |
| Bollard Pull | 65 t |
| Rudders | 2 AZIMUTH Thrusters (ASD) |
| Joystick | Fitted |

CAPACITY

| | |
|-------------|-------------|
| Fuel Oil | 187.14 tons |
| Fresh Water | 33.09 tons |
| Foam | 35.10 tons |

MACHINERY

| | |
|--------------|------------------------------------------------|
| Main Engines | 2x Niigata 6L28HX – 2,465 BHP each |
| Generators | 2x NORDHAVN /SCANIA GAS112-07 - 150 KW each |
| | 1x Cummins CCJF60KCS 60 KW |
| Propulsion | 2x Z-peller / ZP-41, 2,700 mm / 220 rpm |

ACCOMMODATION

Cabins 5
Berths 8

FIRE FIGHTING

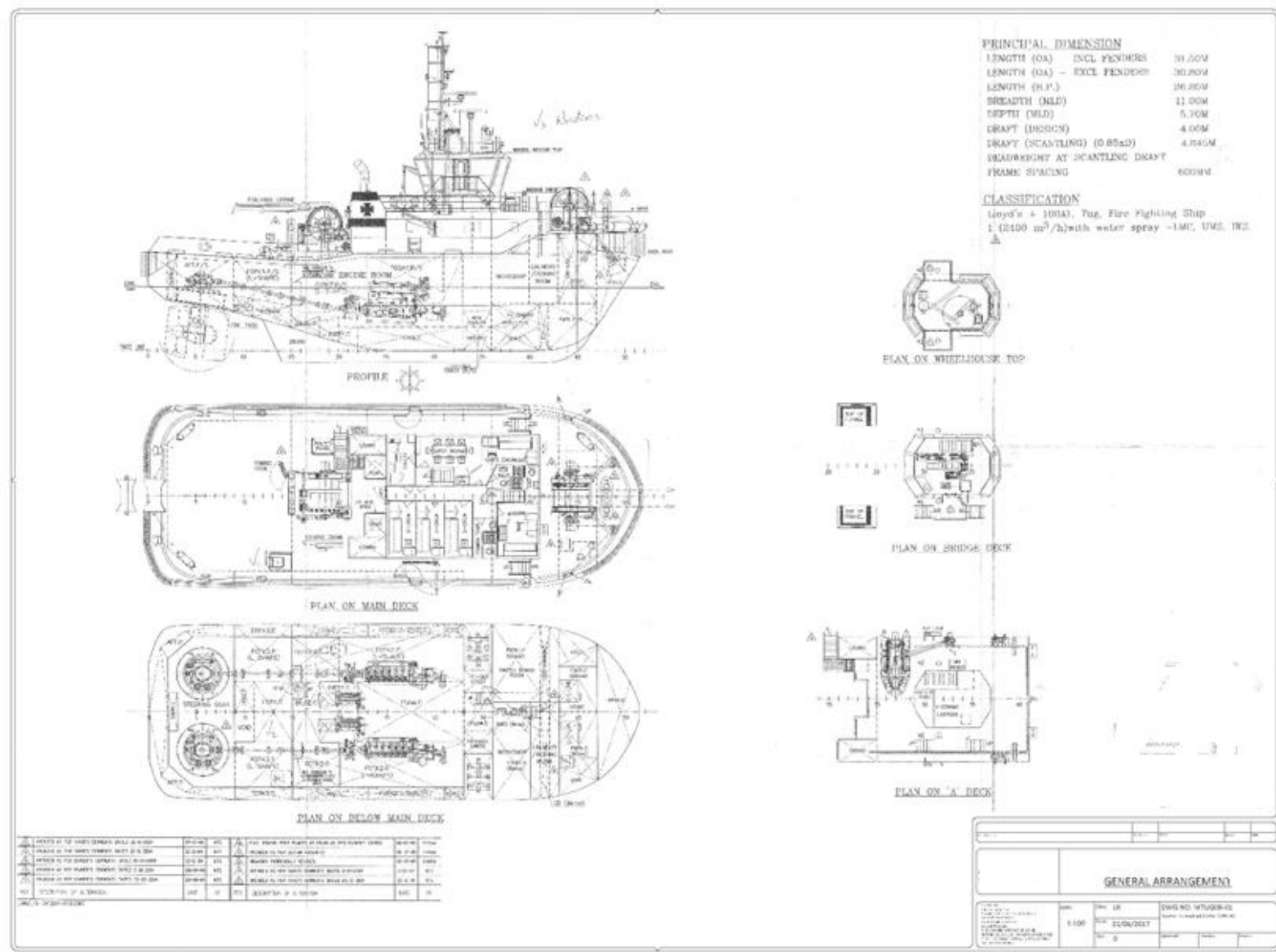
Class FIFI I
Monitors 2 x 1200 m³/h
Pumps 2700 m³/h

DECK EQUIPMENT

Aft Winch Hydr. IBERCISA MR-H/170/2/800-52/is
Forward Winch Hydr. ME2.2THAW30TTW
Hydraulic Crane FASSI, 1.325 t

LIFESAVING

Liferafts 2 x 10 persons



Particulars are believed to be correct but are not guaranteed. All figures given are approximate only. Owners reserve the right to amend the specifications without notification.