

MEGATUGS

Salvage & Towage

113 Filonos Street,
185 35 Piraeus,
Greece
T: +30 210 4522131
F: +30 210 4180176
W: www.megatugs.gr

PANTANASSA



PARTICULARS

| | |
|--------------------------|---|
| Vessel Type | Anchor Handling, Salvage Tug |
| IMO Number | 9332561 |
| Port of Registry | Piraeus |
| Year Built | 2005 |
| Classification notations | Bureau Veritas Hull Mach, Tug, Oil Recovery Ship, FIFI I – Water Spray, Unrestricted navigation |

DETAILS

| | |
|------------------|-----------------------------|
| Length Overall | 40 m |
| Breadth | 11.8 m |
| GRT-NRT | 499/149 |
| Depth Moulded | 4.6 m |
| Maximum draft | 3.8 m |
| Clear deck Space | 150 m ² |
| Deck loading | 5 t/m ² |
| Max Speed | 13 kn / 7 m ³ |
| Economical speed | 10 kn / 4.2 m ³ |
| Bollard Pull | 61.5 t |
| Sewage Plant | MARPOL compliant 20 persons |
| Rudders | Twin |
| Joystick | Not fitted |

CAPACITY

| | |
|-------------|-----------------------|
| Fuel Oil | 368.18 m ³ |
| Fresh Water | 172.3 m ³ |
| Foam | 7.8 m ³ |
| Detergent | 9.3 m ³ |

MACHINERY

| | |
|----------------|---|
| Main Engines | 2 x Caterpillar 3516B – 2026 BHP each |
| Generators | 2 x Caterpillar 3306C – 311 BHP - 232 kW each |
| Port Generator | 1 x CAT DE110E2 110kVA |
| Bow Thruster | 3 t |
| Propulsion | 2 x Fixed pitch |



113 Filonos Street,
185 35 Piraeus,
Greece
T: +30 210 4522131
F: +30 210 4180176
W: www.megatugs.gr

ACCOMMODATION

Berths 3x 1, 1x 2, 3x 4
Total 17

FIRE FIGHTING

Class FIFI I
Monitors 2 x 1200m³/hr
Pumps 1 x 2900m³/hr

DECK EQUIPMENT

Towing Winch

Type Double drum waterfall
Pull 50 t
Wire Capacity 1000 m x 42 mm

Anchor Handling Winch

Type Plimsoll double drum waterfall
Pull 50 t
Brake Holding 120 t
Wire Capacity 1000 m x 42 mm

Tugger Winch

Number & Capacity 2 x 5 t SWL
Wire Capacity 100 m x 26 mm

Other Deck Equipment

Towing Pins Plimsoll 100 t
Stern Roller Plimsoll 1.45 m x 3.5 m, 150 t SWL
Shark Jaws 100 t Strong Jaw, 78 mm
Deck crane Palfinger, PK 15500 C, 910 KG @ 12,40 m

LIFESAVING

Liferafts 2 x 20 man
Lifejackets 39
FRC/Rescue Boat/Davit SOLAS Semi-rigid BMD Rescue boat & KATO KS 454 RC Davit
Lifebuoys 8

SPECIALIST

Rescue Zone Fitted

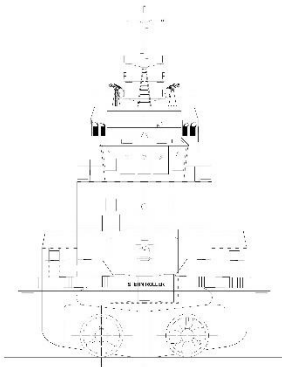
SALVAGE/ ANTIPOLLUTION

Oil Spill Response booms Yes
Salvage pumps Yes

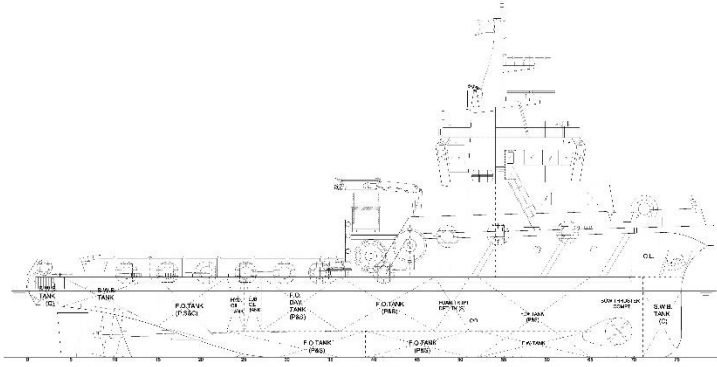
VIDEO PRESENTATION

<https://www.youtube.com/watch?v=fxhwqyR2aKQ>

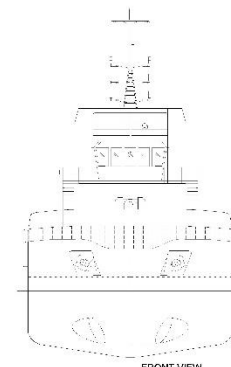
GENERAL ARRANGEMENT



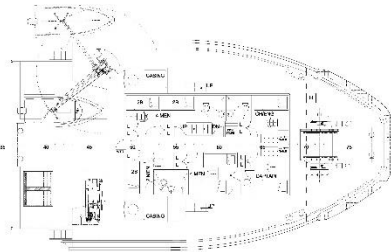
STERN VIEW



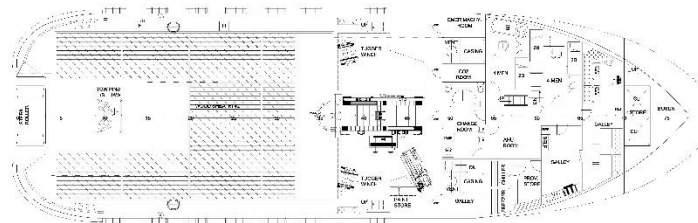
OUTBOARD PROFILE



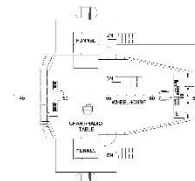
FRONT VIEW



FORECASTLE DECK



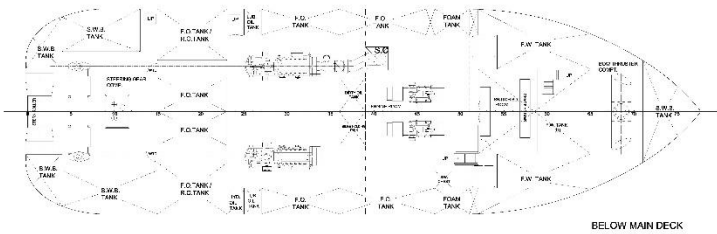
MAIN DECK PLAN



WHEELHOUSE DECK

MAIN DIMENSIONS:

| | |
|---------------------|-------------|
| LENGTH over all | 40,00m |
| LENGTH between P.P. | 34,90m |
| BREADTH moulded | 11,80m |
| DEPTH moulded | 4,60m |
| DESIGN DRAFT | 3,80m |
| TOTAL POWER | 4000 BHP |
| TRIAL SPEED | 12,00 Knots |
| BOLLARD PULL | 50,00 Tons |



BELOW MAIN DECK

| | | | | |
|---|---------------------|--|-------------------------------|--------|
| Description: | Revision: | Date: | Resp: | Clk: |
| | | MV PANTANASSA GENERAL ARRANGEMENT | | |
| SimFWD P.C. 113 Filonos Street 185 35 Piraeus Greece T: +30 210 4522131 F: +30 210 4180176 W: www.megatugs.gr | Scale: 1:100 | Class: BV Date: 05/06/16 | Dwg: MTUG01-02 No.: | |
| | Rev: 3 | Approved: | Checked: | Drawn: |